



# FIS GRASSKI WORLD CUP

CORTINA D'AMPEZZO, SOCREPES

03.09.2022 - GIANT SLALOM

04.09.2022 - SUPERG



## INVITATION AND RACE ANNOUNCEMENT

Sci Club Cortina, in cooperation with GTBell1, announces FIS Grasski World Cup Races in Cortina d'Ampezzo (Italy) on Saturday 3<sup>rd</sup> and Sunday 4<sup>th</sup> September 2022.

### ORGANIZATION

FIS Race director: Michael Stocker (AUT)  
Technical delegate: Hendrik Kuhn (GER)  
Chief of race: Matteo Gobbo  
Chief of course: Luigi Umberto Sommavilla  
Course setters: will be named at the captains meeting  
Referee: will be named at the captains meeting  
Timing service: Crono Cortina - FICR

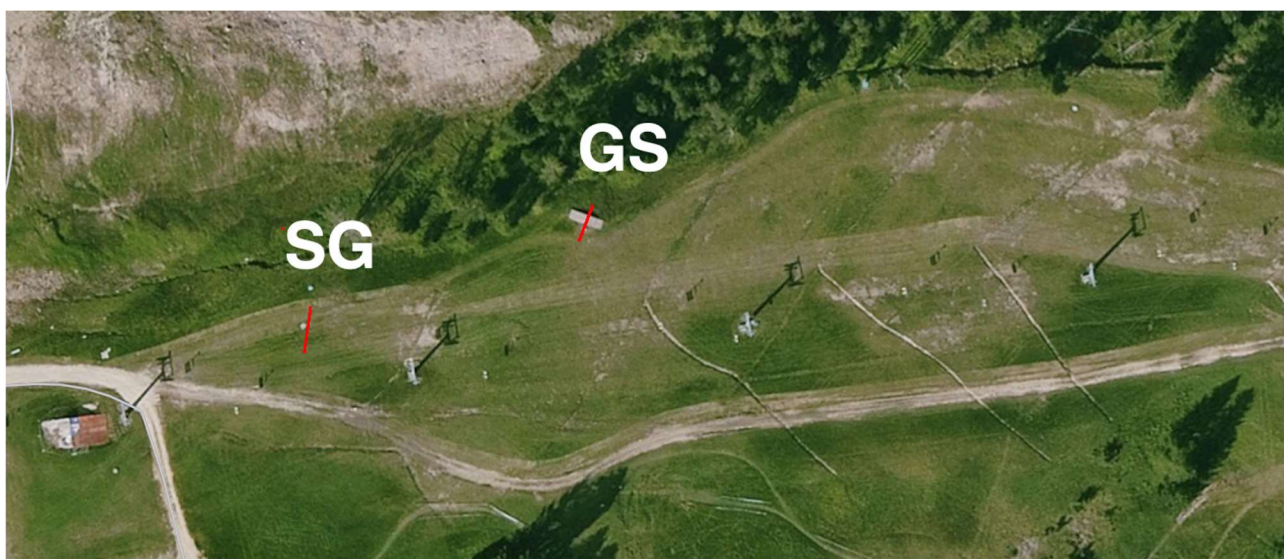
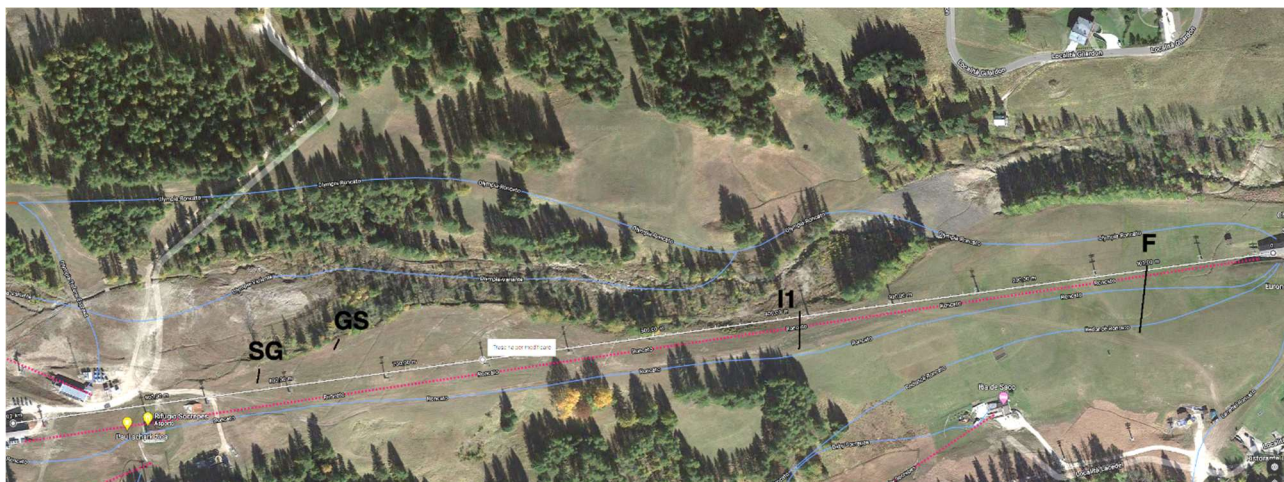
### TECHNICAL INFO

Course: Roncato, Cortina d'Ampezzo (Italy)  
Disciplines: Giant Slalom, SuperG  
Categories: Men, Women  
Applications: Only by mail at the address: [info@sciclubcortina.it](mailto:info@sciclubcortina.it)  
Deadline: 01.09.2022  
Race office: Mrs. Monica Bernardi – tel. +39 0436 4740  
Team captains meeting: ISTA office, Socrepes - Cortina d'Ampezzo  
Insurance: Organizers assume no responsibility for accidents and damages of competitors and third parties during trainings and competitions  
  
Protests: According to the rules IWO for grass skiing  
Material: The skis must satisfy the rules IWO for grass skiing  
Lifts: 25 EUR for 2 days  
Notice: Only completely biologically degradable washing and gliding substances may be used  
The grass skis may be lubricated or cleaned only in the washing and servicing area  
A competitor has to pay 20 EUR in case of loss of his race bib

### COVID 19 - HYGIENE PROTOCOL

The event is organized complying with the current applicable regulations of Italian Authorities as well the FIS COVID-19 prevention guidelines.

## SLOPE – TECHNICAL DETAILS



### Slope “Roncato”

<b>SG</b>	Start	1.488 mt.
	Finish	1.350 mt.
	Vertical drop	138 mt.
	Length	814 mt.
<b>GS</b>	Start	1.464 mt.
	Finish	1.350 mt.
	Vertical drop	114 mt.
	Length	685 mt.

## EVENT PROGRAMME

DATE	SCHEDULE	LOCATION
<b>Friday, 2<sup>nd</sup> September</b>		
Around noon	Teams' arrival	
16.00 – 18.30	Official training - free	Socrepes
19.00	Team captains meeting GS	Socrepes
<b>Saturday, 3<sup>rd</sup> September</b>		
8.30 – 9.30	Warm up GS	Socrepes
11.15	GS – 1 <sup>st</sup> run	Socrepes
14.15	GS – 2 <sup>nd</sup> run	Socrepes
16.00	Prize giving ceremony	Chalet Tofane (Socrepes)
16.30	Team captains meeting SG	Socrepes
<b>Sunday, 4<sup>th</sup> September</b>		
8.45 – 10.00	Warm up SG	Socrepes
10.45	SG	Socrepes
13.00	Prize giving ceremony	Chalet Tofane (Socrepes)

## ACCOMMODATION AND MEALS

Reservations are managed by the LOC.

Please confirm final rooming list by mail, at: [sciclubcortina1903@gmail.com](mailto:sciclubcortina1903@gmail.com) by 26th August 2022.

Teams will be accommodated at:

### **Hotel Victoria 4\***

Corso Italia, 1, 32043 Cortina d'Ampezzo

Web site: [www.hotelvictoriacortina.eu](http://www.hotelvictoriacortina.eu)

Tel: +39 0436 3246

### **Hotel Dolomiti 3\***

Via Roma, 33, 32046 San Vito di Cadore

Web site: [www.hoteldolomiti.com](http://www.hoteldolomiti.com)

Tel: +39 0436 890184

Cost is 70 EUR for person/day in half board condition. City tax excluded.

Lunch is possible at Chalet Tofana (race area).

## MAP – HOW TO REACH CORTINA D'AMPEZZO

Cortina is crossed by route SS 51 in a North-South direction and the SR 48 of the Dolomites in an East-West direction. The motorway exits for Cortina are A27-Belluno from the South (44 mi / 72 km) and A22 Bressanone from the North (54 mi / 87 km).

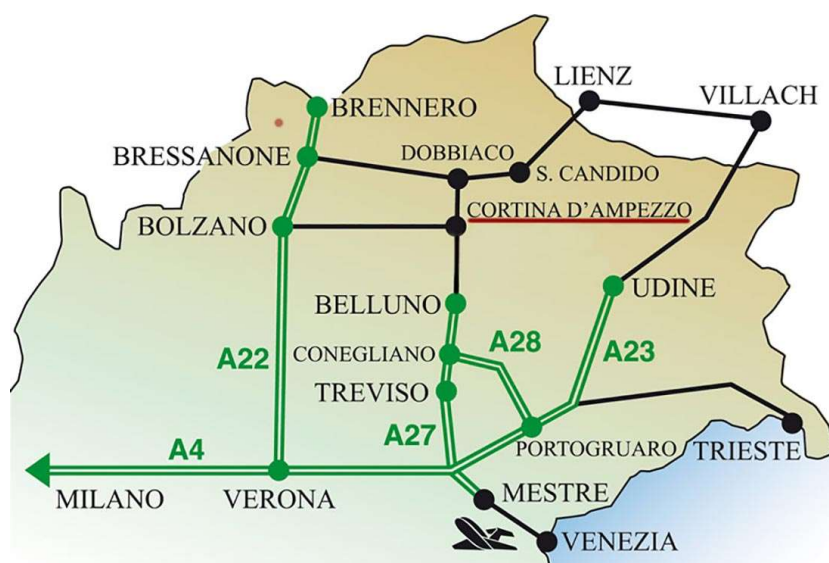
How far is Cortina:

160 km from Venice Airport (Marco Polo) / 430 km from Milan Airport (Linate)

165 km from Innsbruck (AUT) / 550 km from Vienna (AUT)

445 km from Zurich (SUI) / 320 km from Munich (GER)

Race area location (Socepres): <https://goo.gl/maps/DSREGTWt8m6JViZa7>



## GENERAL INFO

### Useful numbers

Telephone country code: +39

Ambulanza/Medical Emergency 118

Polizia/Police 113

### Traffic rules

No cellphone used while driving

Urban centre speed limit 50 km/h

Motorway speed limit 130 km/h (110 km/h in case of rain)

Main extra-urban road 110 km/h (90 km/h in case of rain)

Secondary extra-urban road 90km/h

### Drinking & Driving

Alcohol limit 0,5 g/l

### Smoking

Smoking is forbidden in many public places in Italy, such as bars, restaurants, hotels and in all offices/working spaces.